

### MONITOR • MANAGE • CONTROL • SECURE • MONITOR • MANAGE • CONTROL

**ContentKeeper ARM** generates comprehensive reports in a choice of formats: Web (HTML), Word and Excel (CSV), TEXT (ascii).

**ContentKeeper ARM** automatically delivers these reports to business unit managers via email (SMTP) or Web.

**ContentKeeper ARM** loads and analyses Gigabytes of data.

Silver – 2GB

Gold – 5GB

Platinum – Unlimited

**ContentKeeper ARM** enables in-depth interrogation of ContentKeeper log file data.

**ContentKeeper ARM** analyses many protocols, such as web, mail and FTP usage.

**ContentKeeper ARM** presents information clearly and concisely using customer chosen chart formats.

**ContentKeeper ARM** includes task scheduling for “set and forget” data analysis.

**ContentKeeper ARM** features an intuitive user interface with a web-like look and feel.

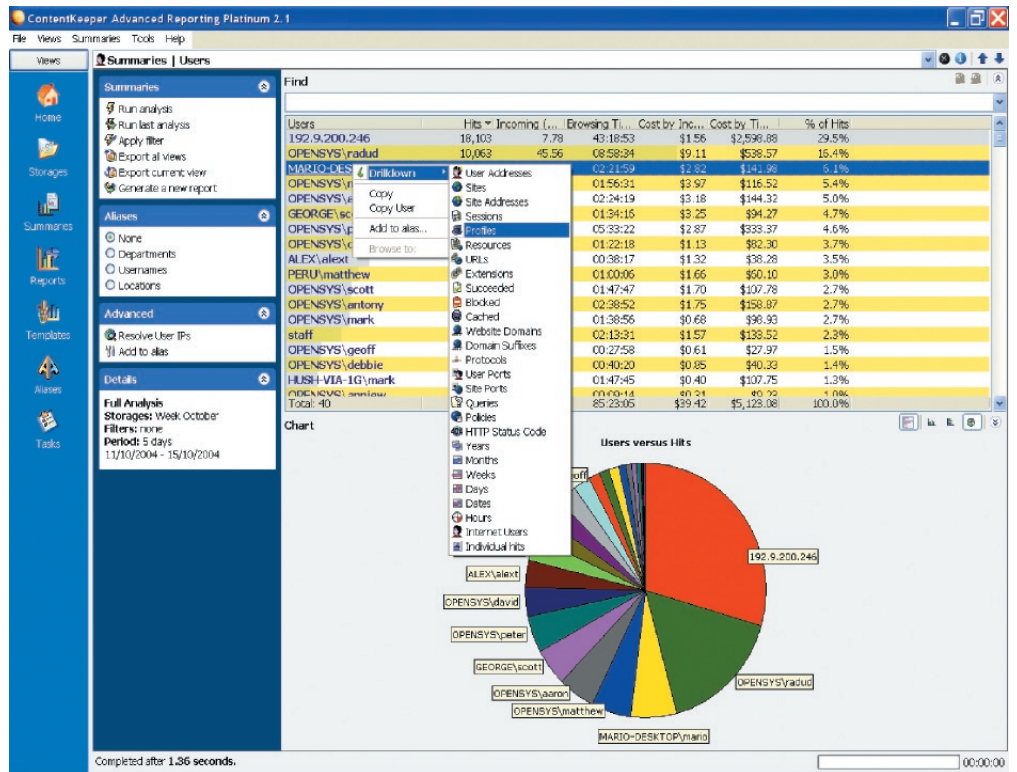
#### ContentKeeper Technologies

specialises in producing state-of-the-art appliances and software designed to assist Corporate, Government, educational and ISP clients to better manage their organisation's access to internet resources.

### ContentKeeper Advanced Reporting Module (ARM)

**ContentKeeper Advanced Reporting Module** provides comprehensive reporting on Internet and email usage for large and small enterprises, with support for ContentKeeper Web, ContentKeeper Mail as well as most popular firewall and proxy applications in a simple-to-use interface.

**ContentKeeper Advanced Reporting Module** has been designed to efficiently load and analyse Gigabytes of data to a single workstation, providing an enterprise-scale monitoring solution and offering a completely automated reporting function for small and large organisations.



Match your investment and reporting needs to three levels of Advanced Reporting Packages. Choose from **SILVER**, **GOLD** and **PLATINUM** reporting levels.

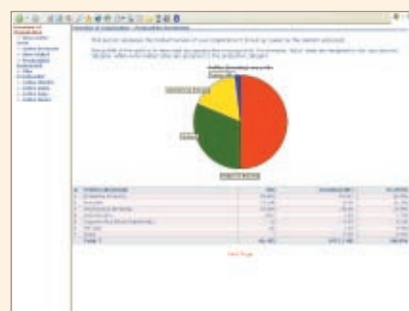
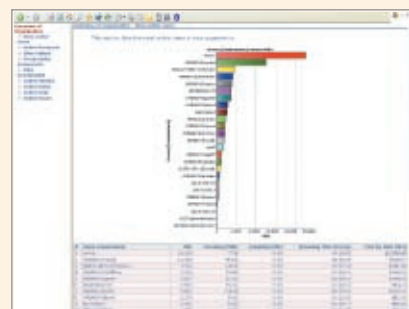


## MONITOR • MANAGE • CONTROL • SECURE • MONITOR • MANAGE

### Features in Detail

<b>Enterprise-level Capacity</b>	<p><b>ContentKeeper's Advanced Reporting Module</b> has been engineered with the massive data requirements of enterprise scale organisations in mind. Gigabytes of data can be imported and analysed using a scalable storage system and enhanced reporting engine. Each package is designed to monitor your organisational reporting needs</p> <p><b>SILVER</b> - 2GB,  <b>GOLD</b> - 5GB,  <b>PLATINUM</b> - unlimited</p>
<b>Automated Tasking</b>	Schedule large data imports and report generation to occur overnight for a true "set and forget" approach to Internet and email traffic analysis. Create and email reports to business unit managers automatically.
<b>Policy Based Reporting</b>	Allows you to accurately monitor and manage compliance against your Internet and email usage policies, linked to ContentKeeper policies and categories.
<b>Template Editor</b>	Create your own report templates based on the unique requirements of your organisation – or use one of the pre-prepared templates.
<b>Flexible Data Importing</b>	Import your log file(s) data straight from <b>ContentKeeper</b> , a text file, SQL database, via FTP or directly from a compressed folder (GZip). Real time import from syslog also supported
<b>Multi Protocol Support</b>	Each <b>ContentKeeper's Advanced Reporting Package</b> offers reports specific to your organisational needs.  You can choose from 19 different formats – ranging from Microsoft Proxy, Novell, Borderware and ContentKeeper log sources.
<b>Report Wizard</b>	<b>ContentKeeper's Advanced Reporting Module</b> includes easy to use Report Wizards to help you quickly create comprehensive reports.
<b>Configurable Aliases</b>	Multi-level aliasing enables you to sort data based on logical groups for your organisation, such as departments, locations, types of browsing, and Intranet pages.
<b>Simple set up and configuration</b>	<b>ContentKeeper's Advanced Reporting Module</b> provides powerful analysis and reporting tools for enterprise scale organisations and is very easy to install and configure. Run the installation, import your log files and you're away!

**Preferred hardware requirements** Pentium PIII-500 MHz or faster Office® 97, 2000 or XP (for Microsoft® Word reports) Microsoft® Internet Explorer 6.0 SP1+ Microsoft® MDAC 2.7+ (to use SQL loader). 15 MB HDD + 10% of log files imported. e.g. 10GB of log files requires 1GB of HDD space



ContentKeeper is supplied and supported worldwide through a network of resellers and distributors.

**ContentKeeper Technologies  
 Asia Pacific (Headquarters)  
 218 Northbourne Avenue  
 Braddon, ACT 2612 Australia  
 Tel +61 (2) 6261 4950  
 Fax +61 (2) 6257 9801  
[info@contentkeeper.com](mailto:info@contentkeeper.com)  
[www.contentkeeper.com](http://www.contentkeeper.com)**

**Europe (UK)  
 ContentKeeperTechnologies Europe  
 Box 7868, Crowthorne, Berkshire  
 RG45 6XY, United Kingdom  
 Tel +44-(0)-1344-752 740  
 Fax +44-(0)-1344-780 332**



**Download a FREE 20 day trial at  
[www.contentkeeper.com](http://www.contentkeeper.com)**