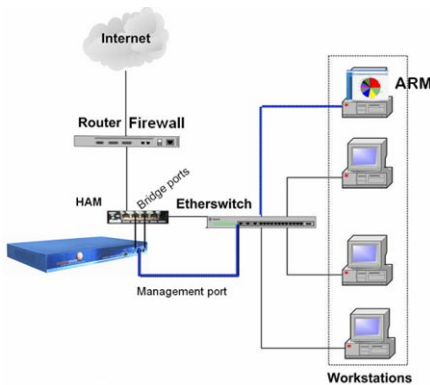


ContentKeeper Web Filtering

*** ContentKeeper announces enhanced SSL filtering capability ***

Two Solutions Now Available:

1. SSLUpgrade - On-board SSL filtering - **included with ContentKeeper Web*
Enhanced monitoring, control and certificate management for SSL sessions

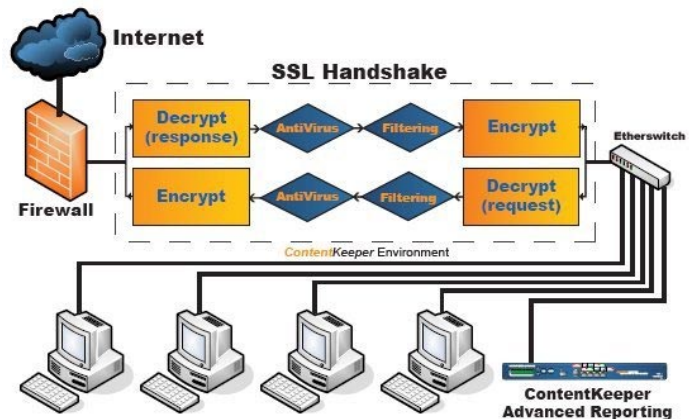


Pre-Loaded VLE Appliance



2. SSL-Inspector -

*Deep Packet Inspection appliance; enhanced security
Revolutionary technology for complete SSL security
management*



.....See next page for details.

Other Recent Announcements:

- CKWeb Filtering - over 100 P2P Protocols now controlled
- CKWeb Filtering - support for multiple LDAP servers - planned 2nd Quarter 2008
- CKHome - extends ContentKeeper protection to off-site users - planned 3rd Quarter 2008
- ContentKeeper Guardian - prevent cyber-bullying and other online misuse - now available



ContentKeeper

Web Content Appliance
with Closed-Loop Collaborative Filtering™



Large Enterprise Security Update - February 2008

ContentKeeper Web Filtering – SSL and SSLi Solutions

SSL Upgrade: On-Board SSL Filtering

At No Extra Cost! - ContentKeeper Web now provides enhanced features to monitor and control threats from all SSL-connected sessions, employing SSL Certificate authenticity and verification techniques. SSL sessions can now be filtered according to your customized Policy settings. New SSL configuration settings offer security yet freedom and flexibility, with protection from persistent hacking techniques.

The enhanced SSL filtering support is fully integrated with ContentKeeper Web Filtering Policies and includes the following configuration options (and more):

- Management of Trusted Certificate Authorities database; Import/Export certificate signing facility
- Reporting of certificates used in Web browsing
- Block any SSL traffic using expired, invalid, malformed or self-signed SSL certificates

SSL Inspector (SSLi): Appliance-based Deep Packet Inspection

ContentKeeper Technologies offers the next layer of security by engineering new technology that significantly improves the way in which SSL traffic is filtered. The ContentKeeper SSLi Appliance completely disassembles SSL packets, and undertakes full Web and content filtering of the underlying URL, performs optional AntiVirus analysis, and reassembles the SSL packets for delivery to the user.

This retains the privacy and security required by users, protects the organization’s network, and allows the freedom and flexibility for employees to undertake the work they are required to do. This technology is unique to the ContentKeeper Internet filtering and IT security solution and can be classed as ‘deep packet inspection’.

The following related ContentKeeper documents are available - contact us for details:

“Understanding SSL and TLS in the context of Internet filtering technologies.”

“ContentKeeper SSL Deployment Diagrams”

Closed Loop Collaborative Filtering™ Global Collection with Hourly Updates

ContentKeeper's GLOBALLY MESHED system is designed to collect, analyze, categorize, edit and distribute URLs worldwide - HOURLY!

All ContentKeeper units receive automated hourly control list updates of newly discovered and processed URLs. All new URLs discovered locally are encoded, encrypted, and sent to the Datacentre for analysis and categorization by our AI engines. These new URLs are then sent out to every ContentKeeper unit in the field every hour.



APL Borealis: is the Canadian Distributor for ContentKeeper products, installation, support & training.
visit: www.contentkeeper.ca for details